



Barryroe

CO-OPERATIVE LIMITED



NEWSLETTER DECEMBER 2023

NEWS, AGRI ADVICE & PROMOTIONS

SEASON'S GREETINGS TO OUR CUSTOMERS

As we approach the end of another year, we wish you all a very happy and peaceful Christmas and prosperous 2024. We thank you for your custom and support given to us during the past year.

Nollaig shona agus athbhliain faoi mhaise daoibh!

Peadar Murphy - CEO **Peter Fleming** – Chairman



Congratulations to Co-op driver, John Coughlan, who received a presentation to mark his retirement at the Co-op's staff function in Courtmacsherry Hotel last weekend, pictured here with Jerry O'Brien, Co-op Agri Operations Manager and Peadar Murphy, CEO.

EARLY CALF NUTRITION MANAGEMENT

- Colostrum:** 35% of calves that die in the first year of life do so because of inadequate colostrum absorption! Your new-born calves are born without immunity to disease, and colostrum contains high levels of antibodies which build immunity in your calves. Colostrum feeding can be summarised by the AHI 1-2-3 recommendation:
 - Use colostrum from the first milking for the first feed.
 - Give colostrum within two hours from the calf's birth.
 - Give at least three litres fresh colostrum from the dam.
- Early Nutrition:** Successful rearing of your calves requires proper colostrum management and unrestricted access to:

- Clean water (in addition to milk/milk replacer fed).
- Fresh, palatable starter concentrate (preferably coarse).
- It is also advisable to have fresh, good quality straw available.
- Hay is not ideal as it can reduce starter concentrate intake.

- Milk Replacer:** Milk replacer offers several advantages over whole milk including cost, performance, and health. Barryroe Co-op can supply skim-based milk replacer for the first time as well as the traditional whey-based products. The Co-Op also stocks the following calf milk

	Heiferlac	Hi-Spec Maverick	Blossom	NutriPure	HeiferPure	Milkvit Energizer (Skim Based)	Milkvit Professional (Skim Based)
Protein	26%	25%	23%	23%	26%	22.5%	24%
Oil	16%	17%	18%	20%	20%	25%	20%

NEWS WATCH

MILK SUPPLY AND PRICE

November milk supply amounted to 4,846,270 litres which was a 18% decrease on November 2022. An improvement in market conditions resulted in Barryroe increasing its price to €6.594 per kg of protein and €4.396 per kg of butterfat, which represents a 2 c/L increase for variable priced milk.

Carbery is continuing to support from its stability fund with 2c/L for both variable and fixed-price milk. Our average constituents for the month are 3.78% protein

4.82% butterfat and our average price paid for variable priced milk is 46.18 c/L, including 0.88c SCC bonus and VAT @5%.

KILBRITTAIN TRACTOR RUN

The Kilbrittain autism tractor run will take place on Sunday 31st December.

BROADSTRAND CHRISTMAS DAY SWIM

The 48th annual Christmas day swim takes place at 12 noon in aid of COPE and the Childrens Cystic Fibrosis Unit at CUH. Please support @ Broadstrand Swim on [GoFundMe.com](https://www.gofundme.com)

Barryroe

CO-OPERATIVE LIMITED

EUROSPAR 
SUPERMARKET



€22.09

JAMESON WHISKEY
700ML



€22.09

POWERS WHISKEY
700ML



€10

BAILEYS IRISH CREAM
700ML



€23.99

TANQUERAY GIN
700ML



€26.99

FIVE FARMS IRISH
CREAM LIQUOR



€8.99

FAUSTINO V11



€20.71

SMIRNOFF VODKA
700ML



€22.09

BOMBAY SAPPHIRE
GIN 700ML



€15

BIRRA MORETTI BEER
12 X 330ML BOTTLES



€16.50

CORONA
12 X 330ML BOTTLES

€7.99

CASILLERO DEL DIABLO
WINE RANGE



€14.95

CARLSBERG 12 PACK
300ML BOTTLES

**WE ARE OPEN FRIDAY 22ND AND
SATURDAY 23RD UNTIL 9PM.
OPEN SUNDAY CHRISTMAS EVE
FROM 7AM UNTIL 5PM.**



€10
EACH

ELITE BISCUIT
RANGE



€8.99

AFTERNOON TEA



ONLY
€15

INISHELLA UNSMOKED HAM
FILLET 3KG



€3.50
EACH

ROSES, HEROES &
QUALITY STREET



€3.50

O'DWYERS DEEP FILLED
MINCE PIES
BUY ONE GET ONE FREE



ONLY
€4.99

WILLIAM CARR
SMOKED SALMON



ONLY
€1.49
EACH

PRINGLES 165G RANGE



ONLY
59c
EACH

CELERY, CARROTS
& BRUSSELS SPROUTS



ONLY
€3.99

SEAFEAST PRAWNS
RANGE



ONLY
€12
EACH

COKE CANS 20 PACK / DIET
COKE / COKE ZERO 24 PACK



ONLY
59c
EACH

PINEAPPLE /YELLOW
MELON



€5

CLEMENTINES
PRESENTATION
BOX



€5

2KG PINK LADY APPLES
IN PRESENTATION BOX



TAYO PARTY BOX



ANY 2 FOR
€3

CLUB ORANGE, CLUB LEMON
ROCK SHANDY, CLUB ZERO (1.75L)

WOODLAND
80CM SANTA
€29.99
REDUCED
FROM €49.99
SAVE €20



NUTRIENT MANAGEMENT IS CRITICAL FOR 2024

As the fertiliser register comes into place for 2024, it is vital that farmers make sure they get good utilisation out of any fertiliser that is spread.

On Farm Check List:

- All farmers should ensure that they have up to date soil analysis results to determine what nutrients each paddock needs. Phosphorus (P) and Potassium (K) levels should be at index 3 and 4.
- If low soil pH is an outstanding issue on your farm, then this is an essential first step that must be addressed in combination with the advice that follows. Lime is the cheapest fertiliser by far, so it is a no brainer that farmers ensure that soil pH is at optimum levels of 6.3 to 6.5 for grass growth.
- Slurry should be used to replace inorganic fertiliser where possible. Target low index P and K paddocks for slurry applications throughout the year.
- Any plan for the farm regarding fertiliser must be crosschecked with permitted fertiliser N and P rates under the Nitrates rules.

Phosphorus (P) and Potassium (K) requirements for grazing

The requirement for P and K for grazed swards can get very complicated (i.e., influenced by stocking rate, baling surplus grass, soil test indices, etc.). A simplified version of P, K and sulphur requirements is shown below:

Soil Index	P (Units/acre)	K (Units/acre)	Sulphur (Units/acre)
1	29	72	16
2	22	52	16
3	15	29	16
4	0	0	16

When to apply Phosphorus (P): The programme for applying P fertiliser across the year should be to front load P in spring (to support early growth), with a target to get between 50-75% of the annual P requirement applied in the first 2 rounds of fertiliser. The remaining balance of the annual P fertiliser rate should then be applied in little and often applications across the summer months

When to apply Potassium (K): Potassium (K) applications generally go hand in hand with P applications due to the typical usage of NPK compounds for supplying P. For maintenance requirements, applying the P and K together will generally work well. It is important to avoid high rates of K in the spring period as excess K at this time can impact negatively on the uptake of magnesium (Mg) by grass, resulting in an increased risk of grass tetany. Where additional K is required for soil fertility build-up, apply the additional K in the autumn period.

Silage Fertiliser Planning

In a grazing scenario, the P:K requirement ratio is approximately 1:2, which reflects common NPK products used for grazing such as 27-2.5-5 and 18-6-12. You need a lot more K for silage than for grazing, because the cow leaves most of the K behind her when she's grazing.

The P:K ratio required in a fertiliser product for silage should be closer to 1:6. Guideline P and K requirements for first and second cut silage crops based on target yields of 2 T/ac and 1.6 T/ac of grass DM respectively are shown in the table below. Rates shown refer to soil fertility maintenance only. Additional P or K for low soil Index situations should also be included in the overall fertiliser plan for the year

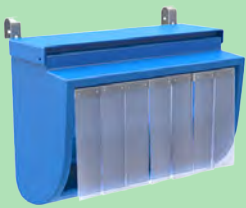
Silage Fertiliser Requirements	P (Units/acre)	K (Units/acre)	Sulphur (Units/acre)
First Cut (2 tonne/acre Dry Matter)	14	100	15
Second Cut (1.6 tonne/acre Dry Matter)	11	80	15

Impact of taking paddocks out for bales

The simplest way to manage this is to target slurry to be returned to paddocks that are cut for bales as the balancer for the higher P and K offtake. If you had to buy a 50 kg bag of fertiliser that was equivalent to the nutrients in 1,000 gallons of slurry, you would have a product with an **NPK value of approximately 5-5-30**. The P:K ratio in slurry is 1:6, so it is very apparent that slurry is a far better fertiliser for silage than for grazing.

If slurry is half water, then it only has half the nutrients! The rates of slurry required to supply the P and K requirements for silage are shown below with rates for 'thick' and 'watery' slurry. Rates shown refer to soil fertility maintenance only. Additional P or K for low soil Index situations should also be included in the overall fertiliser plan for the year.

	Thick Slurry	Watery Slurry
Slurry for 1st cut	3000 gallons/acre	6000 gallons/acre
Slurry for 2nd cut	2500 gallons/acre	5000 gallons/acre
1000 gallons slurry P&K Equivalent	4 bales	2 bales



MINI CREEP FEEDER (LIGHT BLUE)
Only €209



Buffalo Tip over Drink Bowl
ONLY €219



Spillanes CONC FOOTBATH
ONLY €595



Buffalo De-Horning Crate
10% OFF

(Gates & Side Rails sold Separately)



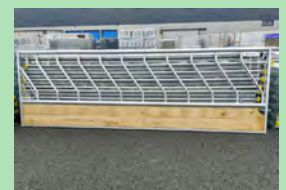
Buffalo 4ft Hang on plastic trough
ONLY €64.95



MilkBar Feeders & Teats
10% OFF



Buffalo Heavy duty 76mm fixed cattle barriers
ONLY €319



Heavy duty 76mm timber bottom cattle barriers
ONLY €575



CHRISTMAS OPENING HOURS

LISLEVANE CENTRAL		
	Eurospar Supermarket	Agri Store
Fri 22nd Dec	8.00am to 9.00pm	8.30am to 5.30pm
Sat 23rd Dec	8.00am to 9.00pm	8.30am to 4.30pm
Sun 24th Dec	7.00am to 5.00pm	CLOSED
Mon 25th Dec	CLOSED	CLOSED
Tue 26th Dec	CLOSED	CLOSED
Wed 27th Dec	8.00am to 6.30pm	8.00am to 5.30pm
Thur 28th Dec	8.00am to 6.30pm	8.00am to 5.30pm
Fri 29th Dec	8.00am to 7.00pm	8.00am to 5.30pm
Sat 30th Dec	8.00am to 6.30pm	8.30am to 4.30pm
Sun 31st Dec	8.00am to 6.30pm	CLOSED
Mon 1st Jan	CLOSED	CLOSED
Tue 2nd Jan	8.00am to 6.30pm	8.30am to 5.30pm

BALLINSPITTLE	
Supermarket	Hardware
7.00am to 8.00pm	8.30am to 5.30pm
7.00am to 8.00pm	8.30am to 5.30pm
8.00am to 3.00pm	CLOSED
CLOSED	CLOSED
CLOSED	CLOSED
7.00am to 8.00pm	8.30am to 5.30pm
7.00am to 8.00pm	8.30am to 5.30pm
7.00am to 8.00pm	8.30am to 5.30pm
7.00am to 8.00pm	8.30am to 5.30pm
8.00am to 4.30pm	CLOSED
CLOSED	CLOSED
7.00am to 8.00pm	8.30am to 5.30pm

	Kilbrittain	Darrara	Inchybridge
Fri 22nd Dec	8.30am to 5.30pm	8.30am to 5.30pm	8.30am to 5.30pm
Sat 23rd Dec	8.30am to 4.30pm	8.30am to 4.30pm	8.30am to 4.30pm
Sun 24th Dec	CLOSED	CLOSED	CLOSED
Mon 25th Dec	CLOSED	CLOSED	CLOSED
Tue 26th Dec	CLOSED	CLOSED	CLOSED
Wed 27th Dec	8.30am to 5.30pm	8.30am to 5.30pm	8.30am to 5.30pm
Thur 28th Dec	CLOSED	CLOSED	CLOSED
Fri 29th Dec	8.30am to 5.30pm	8.30am to 5.30pm	8.30am to 5.30pm
Sat 30th Dec	8.30am to 4.30pm	8.30am to 4.30pm	8.30am to 4.30pm
Sun 31st Dec	CLOSED	CLOSED	CLOSED
Mon 1st Jan	CLOSED	CLOSED	CLOSED
Tue 2nd Jan	8.30am to 5.30pm	8.30am to 5.30pm	8.30am to 5.30pm

